

WHERE OUR WATER COMES FROM

Albuquerque relies on locally pumped groundwater as well as surface water imported from the Colorado River basin via the San Juan-Chama Project. The Albuquerque Bernalillo County Water Utility Authority is one of many agencies tasked with protecting the watersheds in which our local supply originates.

Southern Colorado Diversions

Water from tributaries of the San Juan River (a tributary of the Colorado River) is re-directed southward via the San Juan-Chama project – a series of diversions, tunnels and reservoirs.

Azotea Tunnel

Water from Colorado (called "San Juan-Chama water") empties into Willow Creek near Chama via this tunnel across the Continental Divide.

Reservoirs

San Juan-Chama water and native water are stored in a series of man-made lakes before release downstream.

Diversion/Intake Facility

San Juan-Chama water is diverted from the Rio Grande at Albuquerque. The water is pumped to a treatment plant for purification before eventual distribution to utility customers.

Native Water

An equal amount of native water is diverted along with San Juan-Chama water. The native water is returned to the Rio Grande after use and following treatment at the Southside Water Reclamation Plant (not shown).

Aquifer Storage & Recovery (ASR)

Surplus San Juan-Chama water is stored in aquifer for later use.

LEGEND



Colorado River Basin Water
From tributaries of the Colorado River via the San Juan-Chama Project



Native New Mexico Water
Naturally occurring stream flows in New Mexico



Combined Native/Colorado River Basin Water
San Juan-Chama Project water conveyed through native streams/rivers



Groundwater
Pumped to surface via wells



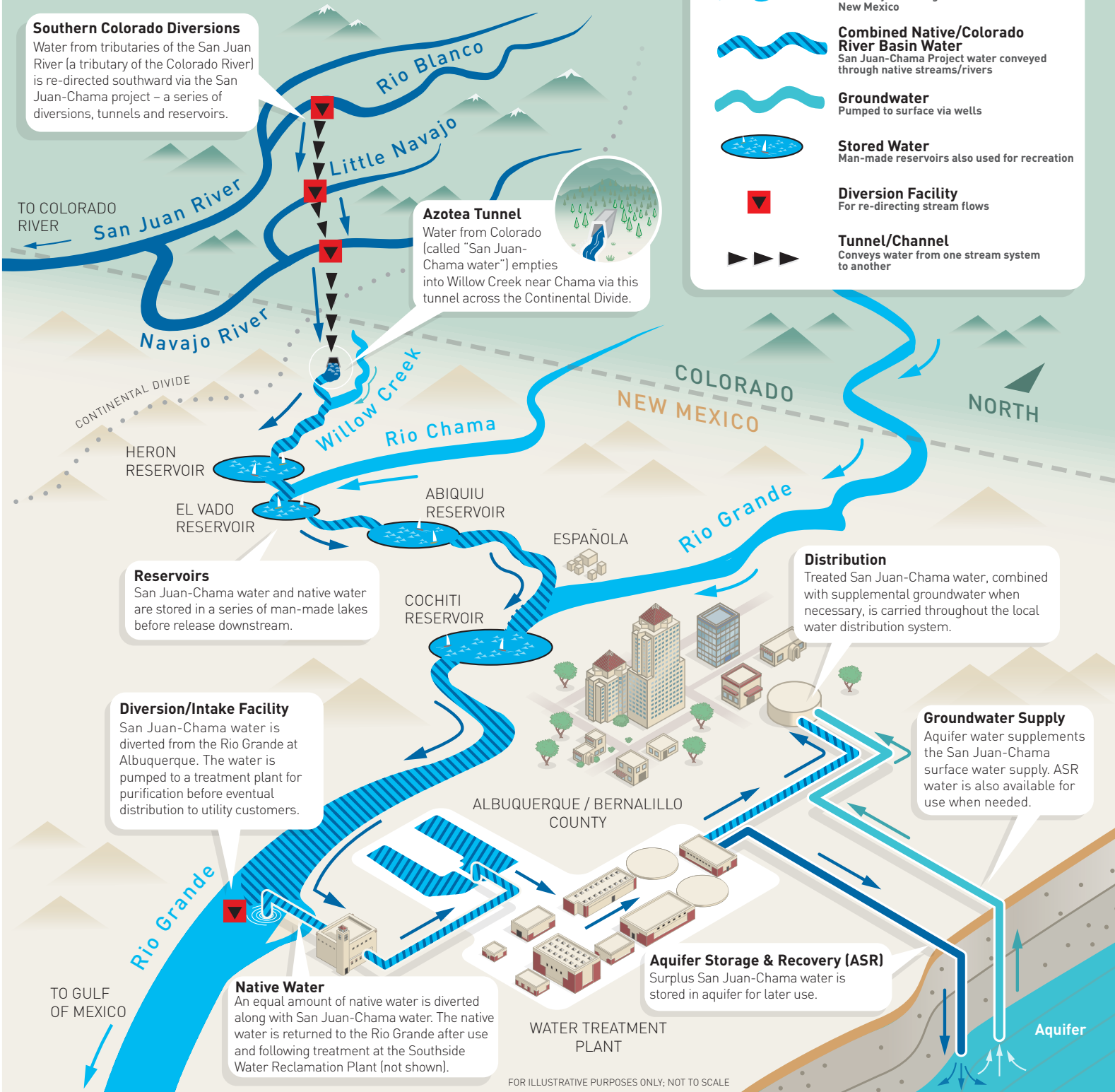
Stored Water
Man-made reservoirs also used for recreation



Diversion Facility
For re-directing stream flows



Tunnel/Channel
Conveys water from one stream system to another



FOR ILLUSTRATIVE PURPOSES ONLY; NOT TO SCALE

OUR WATER: WHERE IT COMES FROM

Albuquerque relies on locally pumped groundwater as well as surface water imported from the Colorado River basin via the San Juan-Chama Project. The Albuquerque Bernalillo County Water Utility Authority is one of many agencies tasked with protecting the watersheds in which our local supply originates.

