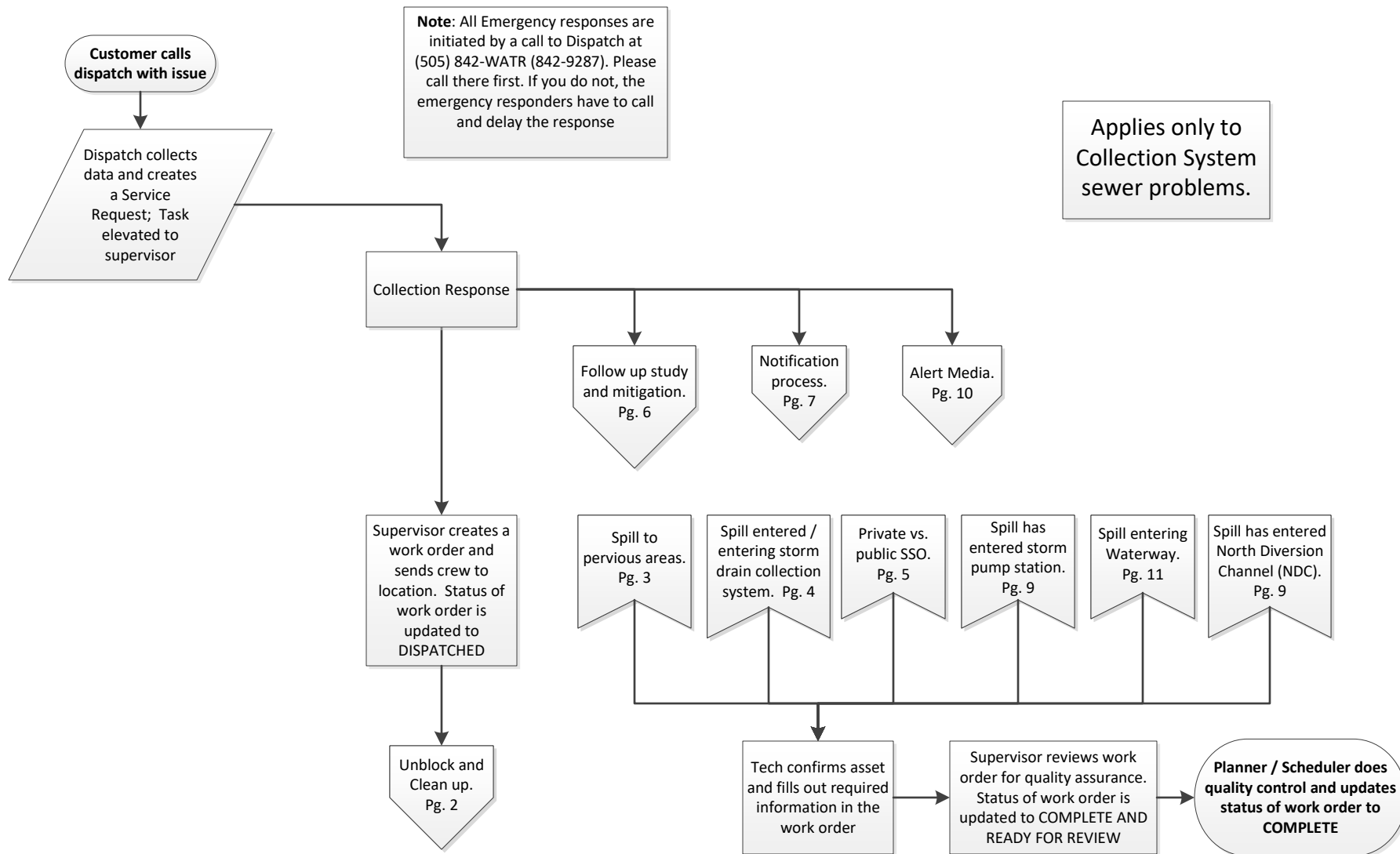


Overflow Emergency Response Plan

07-25-2024

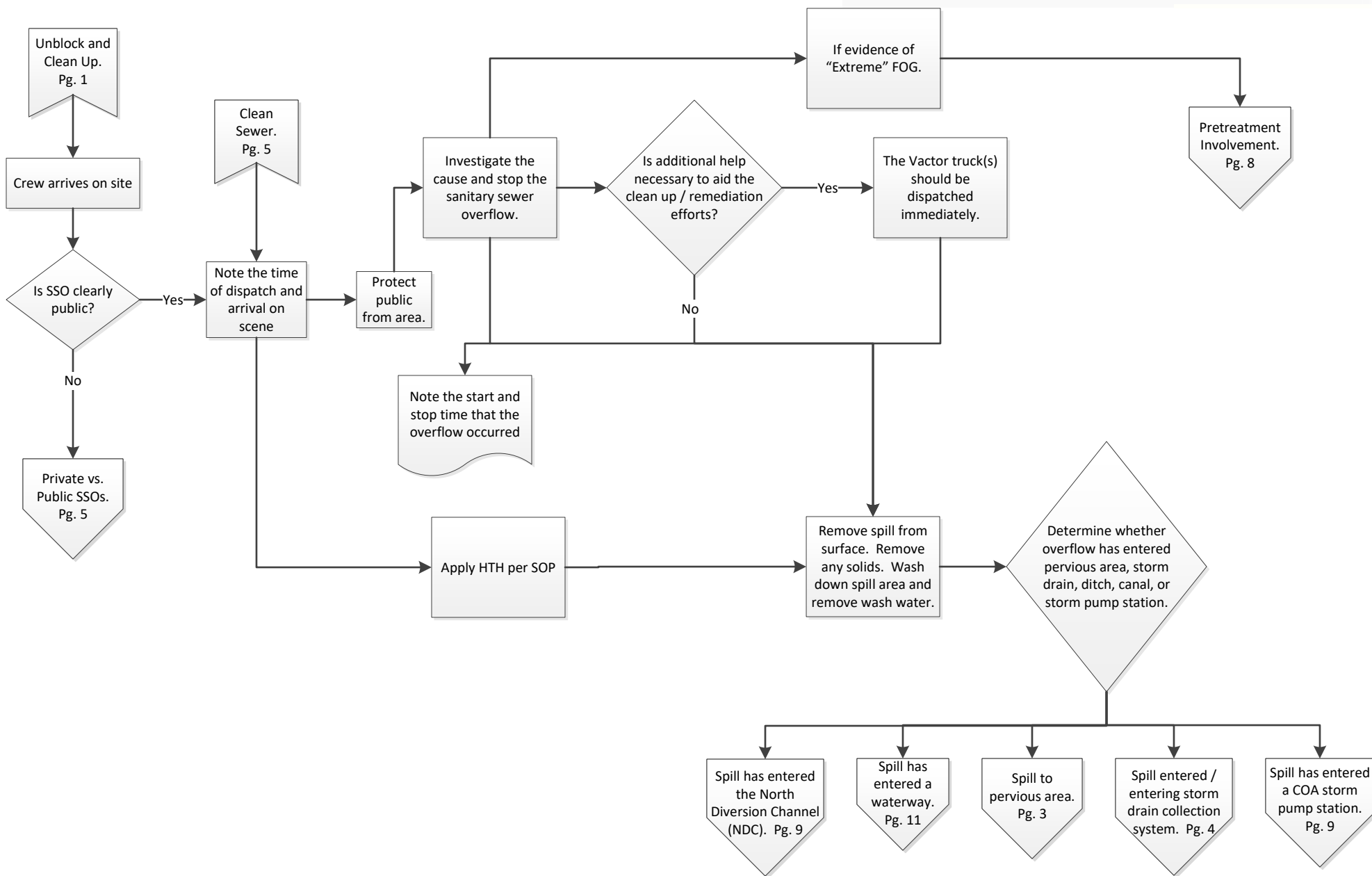
Albuquerque Bernalillo County Water Utility Authority

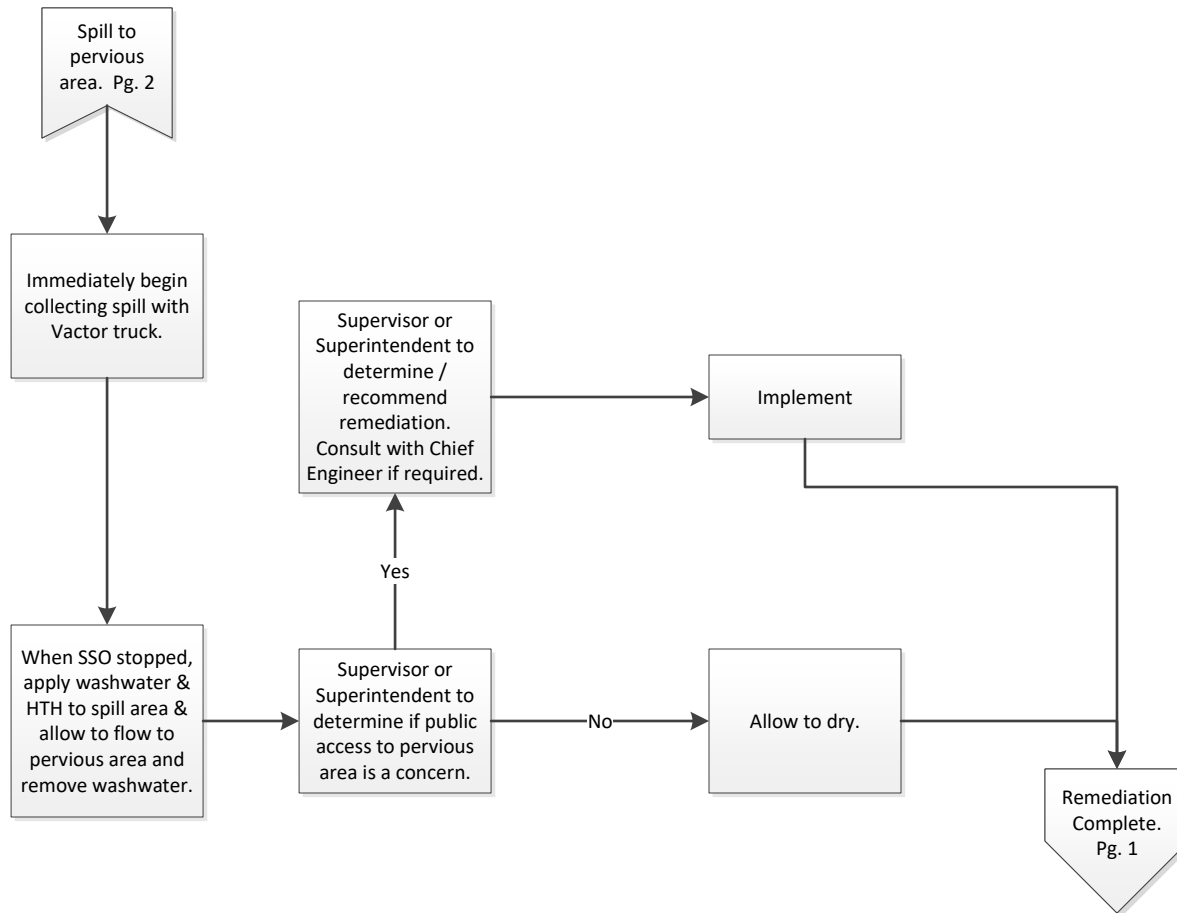


Overflow Emergency Response Plan

07-25-2024

Albuquerque Bernalillo County Water Utility Authority





Overflow Emergency Response Plan

07-25-2024

Albuquerque Bernalillo County Water Utility Authority

Spill entered / entering storm drain collection system. Pg. 2

If possible, position 2nd Vactor to remove spill prior to reaching inlet.

Determine how far downstream the spill has reached.

Add wash water & remove at downstream manhole. Remove immediately if rain is imminent. If not, remove next normal work day.

Wash water to street and inlet.

SSO Reaches COA storm drain.

Assist in clean up as requested.

Remediation Complete. Pg. 1

SSO Reaches	Contact			
	Name	Position	Cell	Office
AMAFCA Facility	Paula Dodge-Kwan*	Director of Operations	(505) 301-1411	(505) 884-2215
Bernalillo County Facility	Patrick E. Chavez [#]	Storm Drainage Maintenance Manager	(505) 934-2704	(505) 848-1505
NMDOT Facility	Barry Lytle ^{##}	District 3: Assistant District Engineer-Maintenance	(505) 659-9155	N/A
COA Facility	Shellie Eaton ^{**}	Storm Drainage Section Manager	(505) 238-5865	(505) 768-2774

Note: Process shown is for typical spills. Spills that are not appropriate for Vactor removal may require a joint response with the impacted MS4 Permittee in which the spill is captured, treated, and determined appropriate for release.

*If Paula Dodge-Kwan is not immediately available, call:
Patrick J. Chavez (PJ): Strmwtr. Qual. Eng, Cell: (505) 362-7342
Sal Hernandez: Superintendent, Cell: (505) 366-8209

[#]In addition to Patrick E. Chavez, call:
Kali Bronson: Stormwater Program Compliance Lead (505) 537-3005

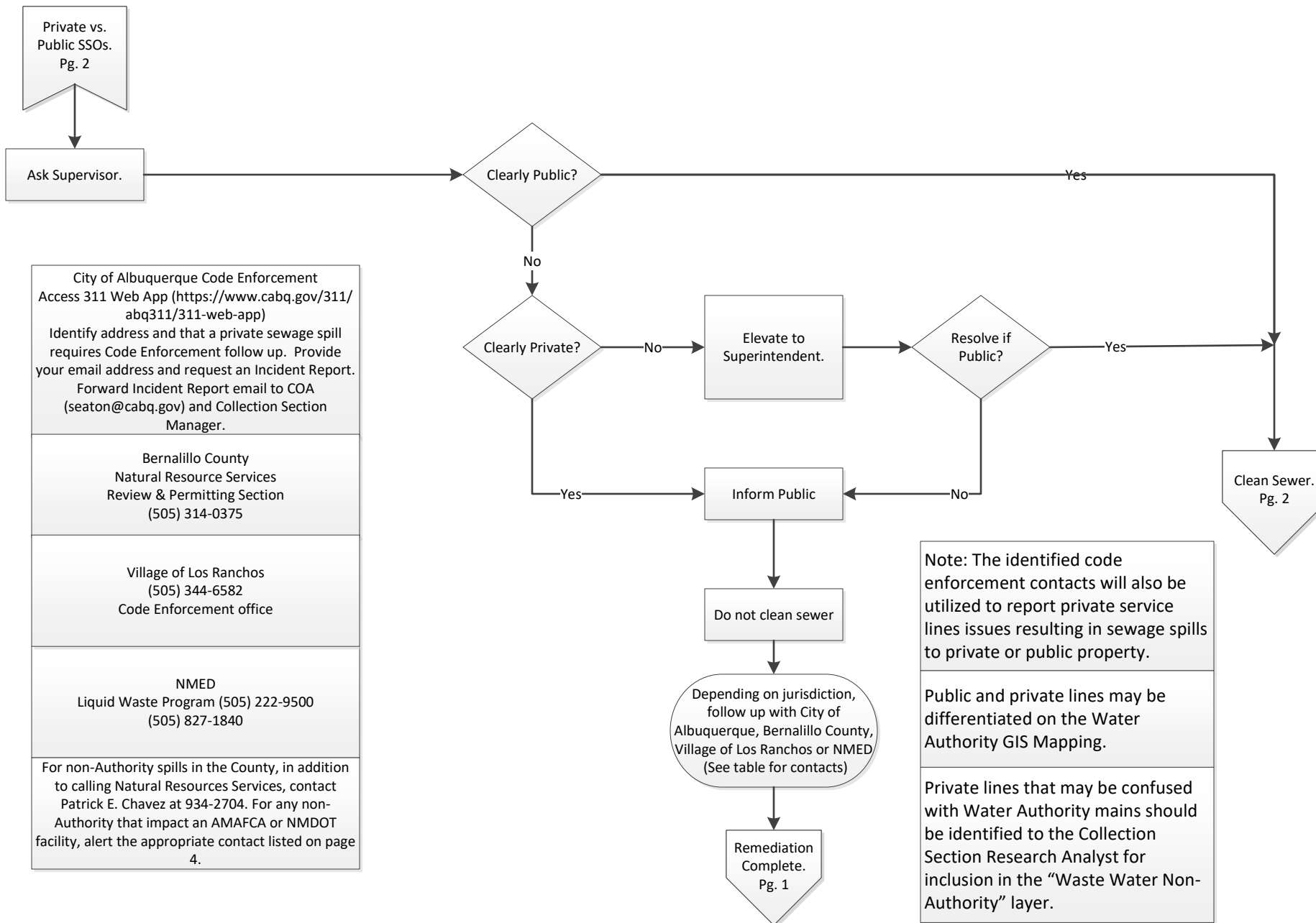
^{##} If Barry Lytle is not immediately available, call:
Jeremy Baca: D-3 Area Maint. Supv. (505) 250-6519
Todd Dunlap: D-3 Area Maint. Supv. (505) 321-5842
Dominic Gallegos: D-3 Area Maint. Supv. (505) 274-4404

^{**}If Shellie Eaton is not immediately available, call:
David Harrison: Engr. Div. Manager (505) 238-4158
Daniel Tapia: O&M Manager (505) 228-6874
Fred Montoya: O&M Supt (505) 366-9118

Overflow Emergency Response Plan

07-25-2024

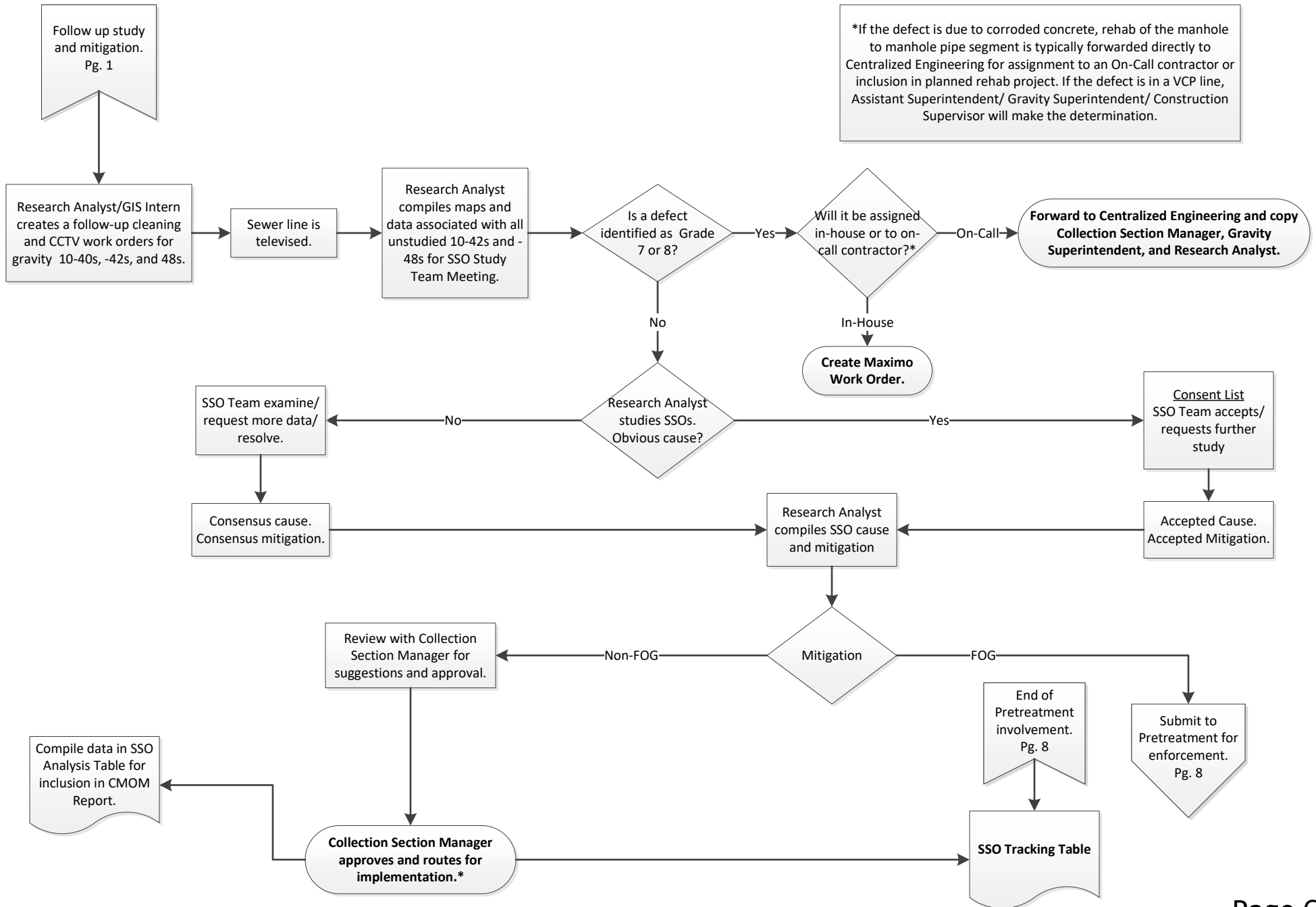
Albuquerque Bernalillo County Water Utility Authority



Overflow Emergency Response Plan

07-25-2024

Albuquerque Bernalillo County Water Utility Authority

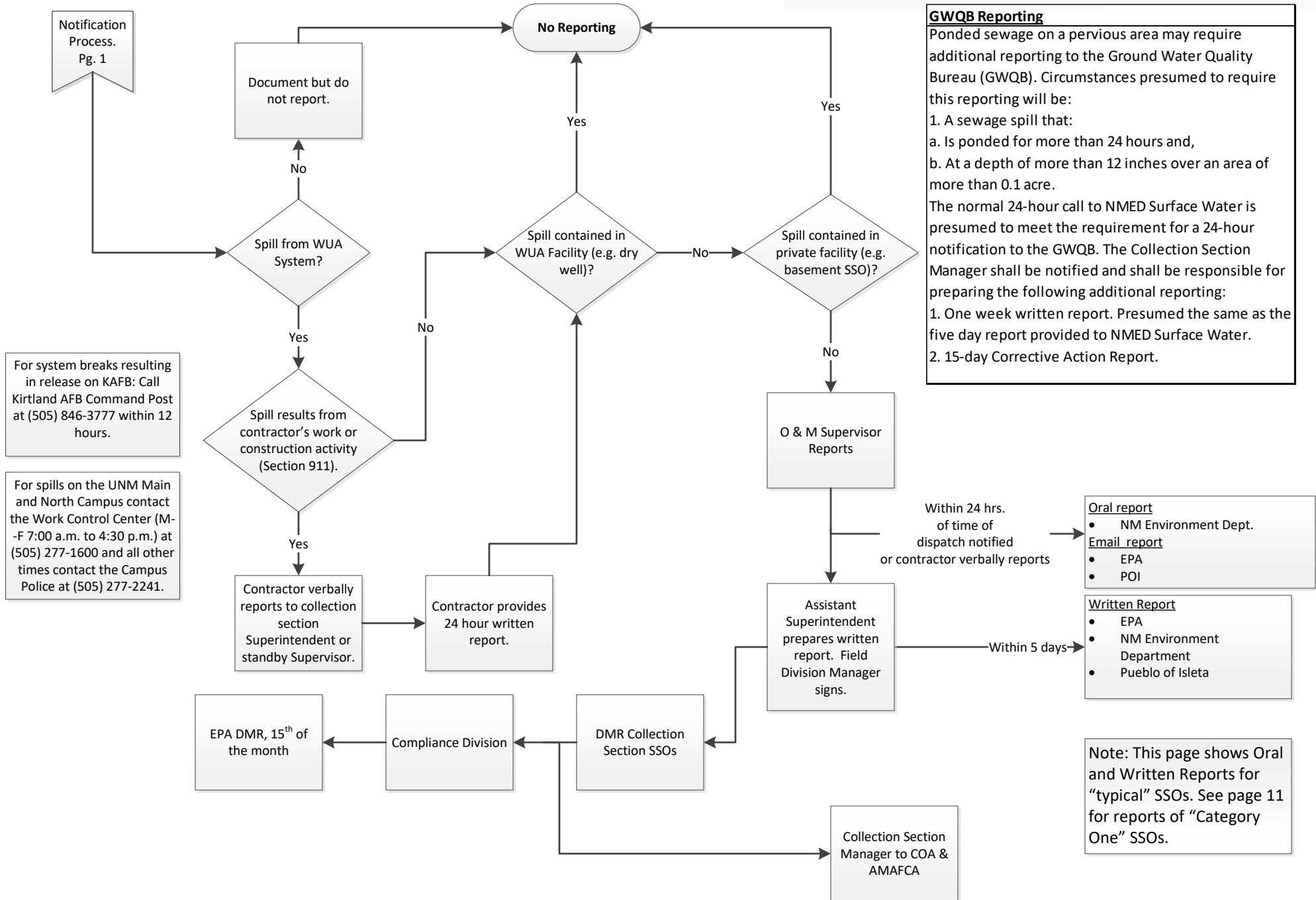


Overflow Emergency Response Plan

07-25-2024

Albuquerque Bernalillo County Water Utility Authority

GWQB Reporting
 Pondered sewage on a pervious area may require additional reporting to the Ground Water Quality Bureau (GWQB). Circumstances presumed to require this reporting will be:
 1. A sewage spill that:
 a. Is ponded for more than 24 hours and,
 b. At a depth of more than 12 inches over an area of more than 0.1 acre.
 The normal 24-hour call to NMED Surface Water is presumed to meet the requirement for a 24-hour notification to the GWQB. The Collection Section Manager shall be notified and shall be responsible for preparing the following additional reporting:
 1. One week written report. Presumed the same as the five day report provided to NMED Surface Water.
 2. 15-day Corrective Action Report.



For system breaks resulting in release on KAFB: Call Kirtland AFB Command Post at (505) 846-3777 within 12 hours.

For spills on the UNM Main and North Campus contact the Work Control Center (M-F 7:00 a.m. to 4:30 p.m.) at (505) 277-1600 and all other times contact the Campus Police at (505) 277-2241.

Within 24 hrs. of time of dispatch notified or contractor verbally reports

Oral report

- NM Environment Dept.
- EPA
- POI

Within 5 days

Written Report

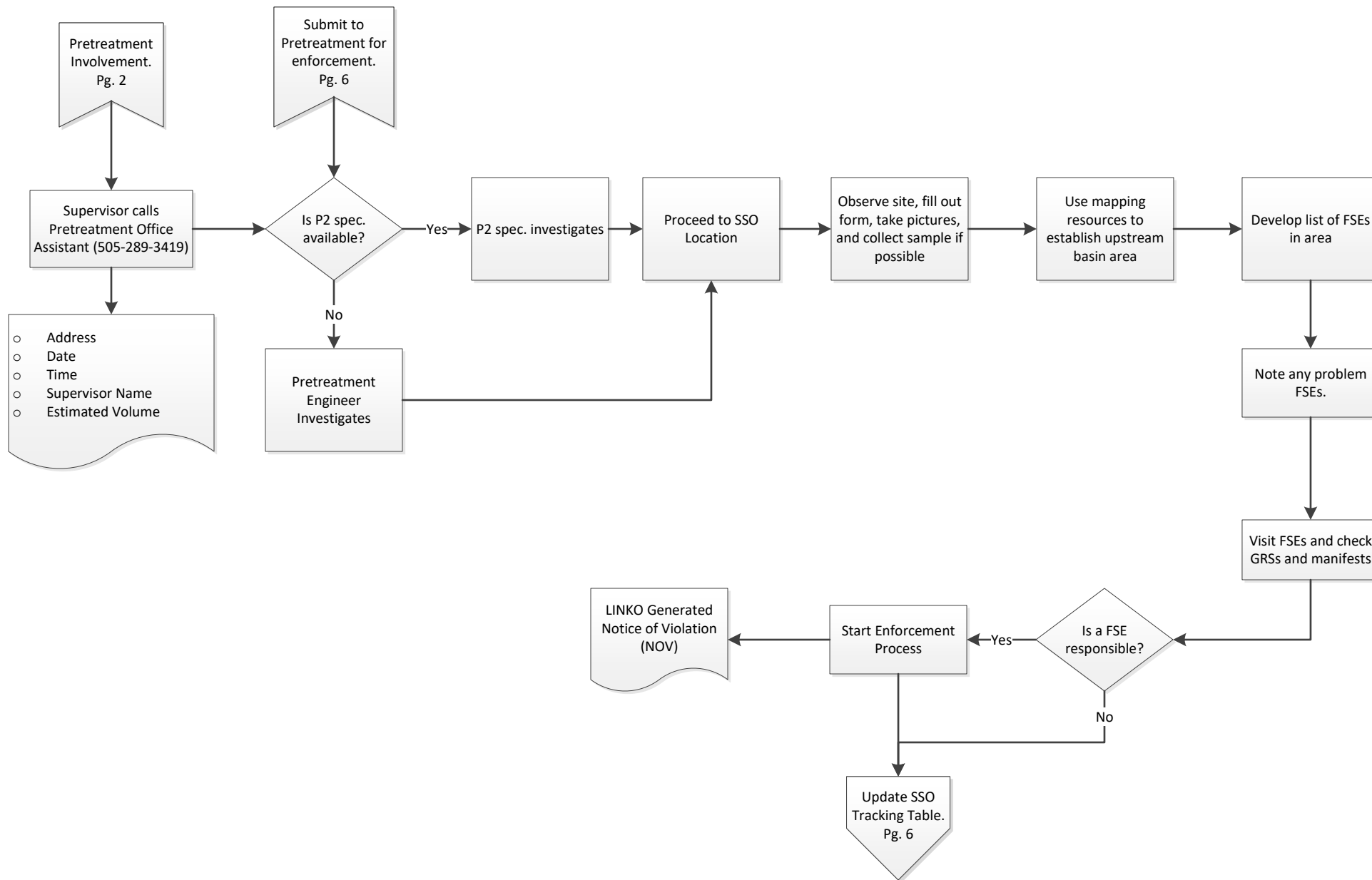
- EPA
- NM Environment Department
- Pueblo of Isleta

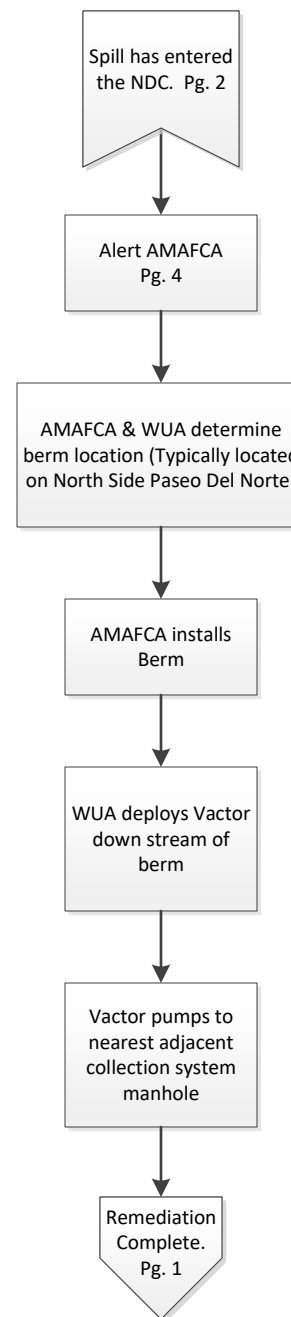
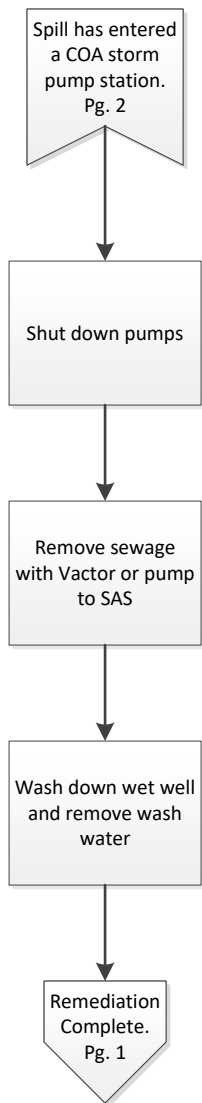
Note: This page shows Oral and Written Reports for "typical" SSOs. See page 11 for reports of "Category One" SSOs.

Overflow Emergency Response Plan

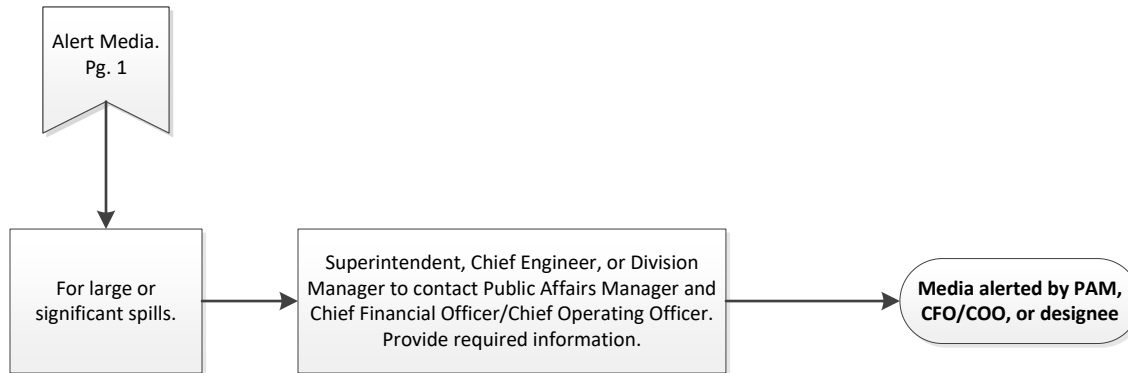
07-25-2024

Albuquerque Bernalillo County Water Utility Authority





Note: Process shown is for typical spills. Some spills may require a joint response with the City of Albuquerque in which the spill is captured, treated, and determined appropriate for release.



Overflow Emergency Response Plan

07-25-2024

Albuquerque Bernalillo County Water Utility Authority

